



OLLSCOIL NA GAILLIMHE  
UNIVERSITY OF GALWAY



# Palus Demos

## Introducing Palus Demos Large Scale Paludiculture Demonstrators (50ha+)

Presentation by Niall Ó Brolcháin

September 2025



OLLSCOIL NA  
GAILLIMHE  
UNIVERSITY  
OF GALWAY

Institiúid na hEolaíochta Sonraí  
Data Science Institute

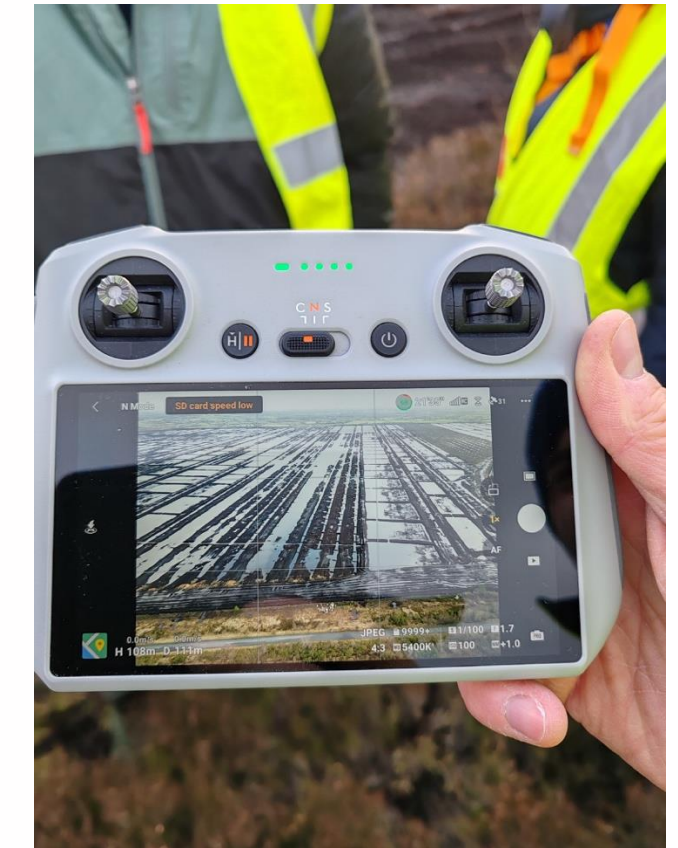


# Palus Demos





# Kick Off in Ireland Feb 2025





# Delivering 3 Large Scale Paludiculture Demonstrators

## Project countries:

Ireland, Netherlands, United Kingdom,  
Austria, Germany

## Budget:

€10 million

## Project duration:

4 years (Feb 1<sup>st</sup> 2025 – Jan 31<sup>st</sup> 2029)

## Project partners:

26 Partners from 5 countries

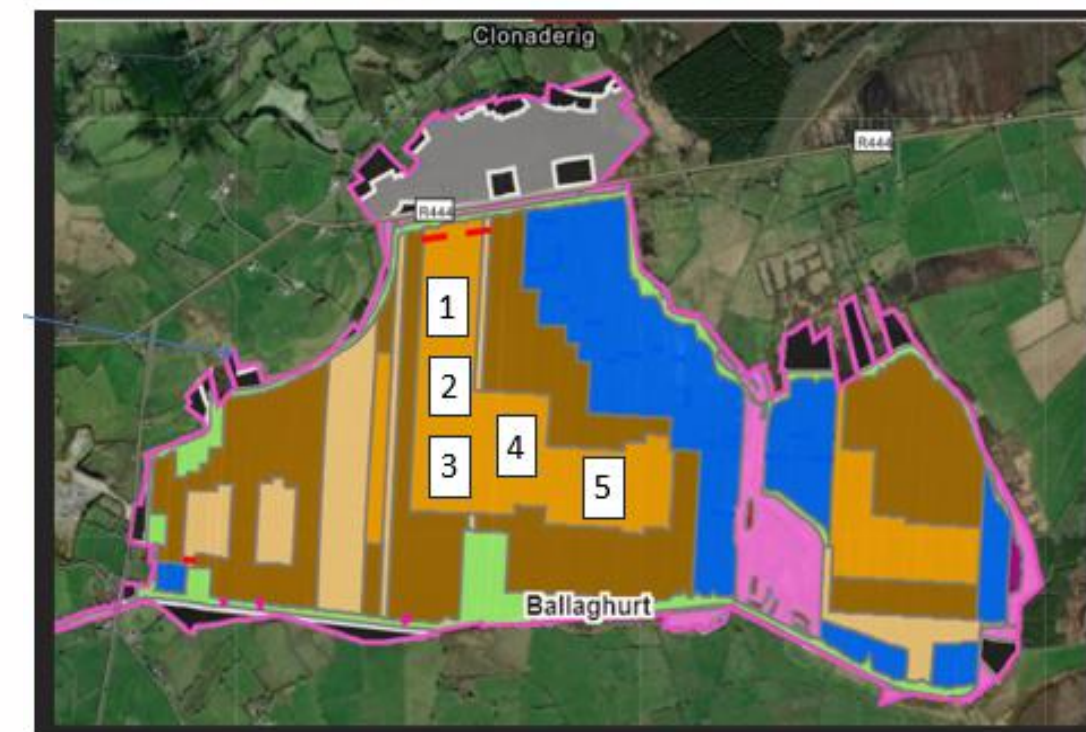
## Paludiculture 50ha Demonstrators:

Ireland – Ballaghurt & Derrighter Farm

Netherlands – Burkmeer

United Kingdom – Greater Manchester &  
Lancashire Mosslands

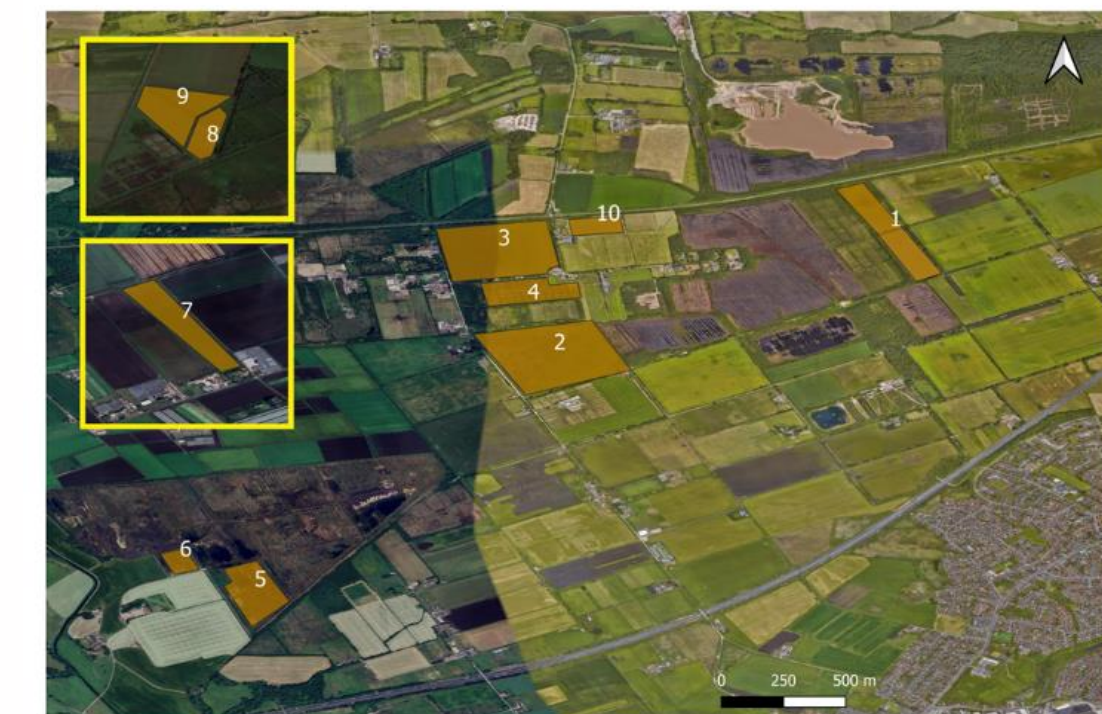
# Palus Demos



IE



NL



UK



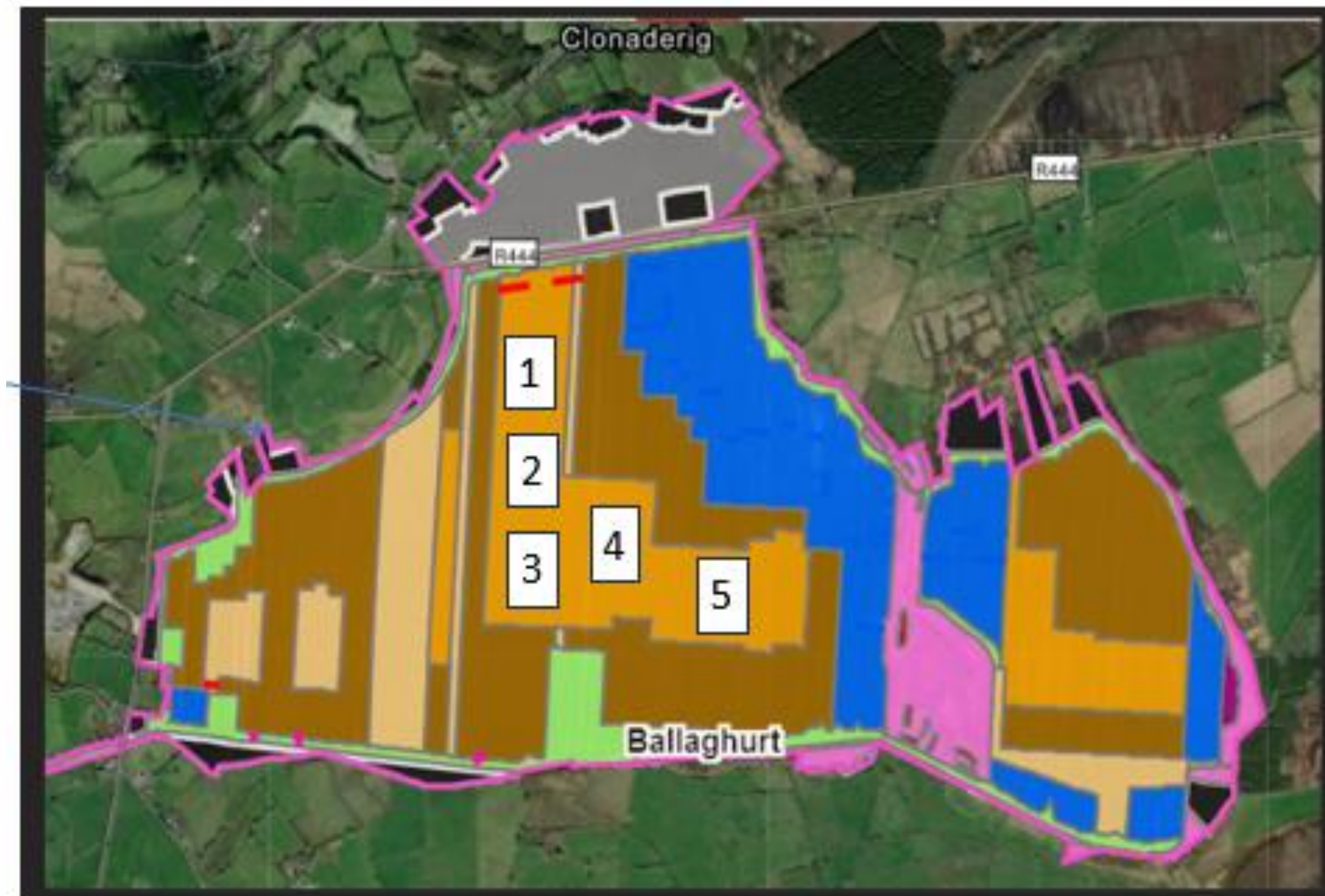
# Paludiculture Demonstrator Ireland



**Partners:** University of Galway, (Coordinator), University College Dublin, Bord na Móna, Aibhainn Beo (The Rivers Trust), Growing Media Ireland, Forum Connemara, Peatland Finance Ireland

## Ireland's demonstrator actions:

- 1) Further establish soil-carbon storage
- 2) Inform future voluntary carbon markets
- 3) Wetland farming by Sphagnum cultivation
- 4) Carbon farming by diverse paludiculture crops
- 5) Create Knowledge Transfer groups
- 6) Generate landscape-scale financing
- 7) Demonstrate low-cost monitoring
- 8) Establish a Peatland Centre of Excellence

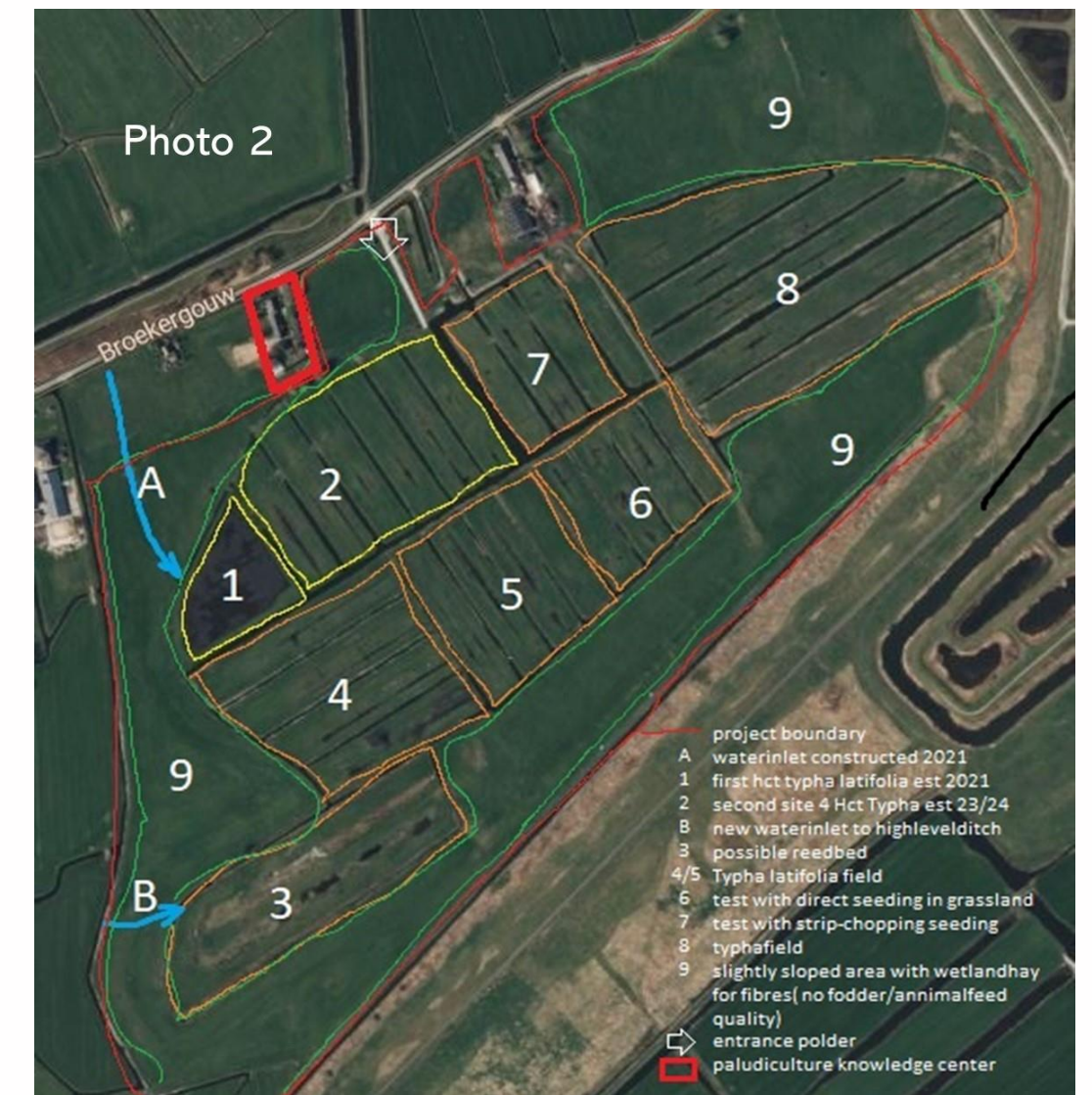


**Irish Demonstrator site at Ballaghurt**



## Paludiculture Demonstrator Netherlands

**Partners:** Struunhoeve Agri B.V., Van Hall Larenstein Uni. Appl. Sc., Uni of Applied science Utrecht, Universiteit van Amsterdam, Vrije Universiteit Amsterdam and Stichting Wetland Products collaborating with Municipality of Amsterdam, Aarhus University, Province Friesland, Kingspan International (Netherlands), Biositrum and Landscape Noord-Holland.



### *Burkmeer near Amsterdam*

The ultimate goal of the Dutch site is to produce enough Typha-biomass to facilitate a small factory producing mineral-binded “Typhaboard”, and in this way to kickstart the local biobased circular building industry as well as delivering a stable, viable income for Farmers!



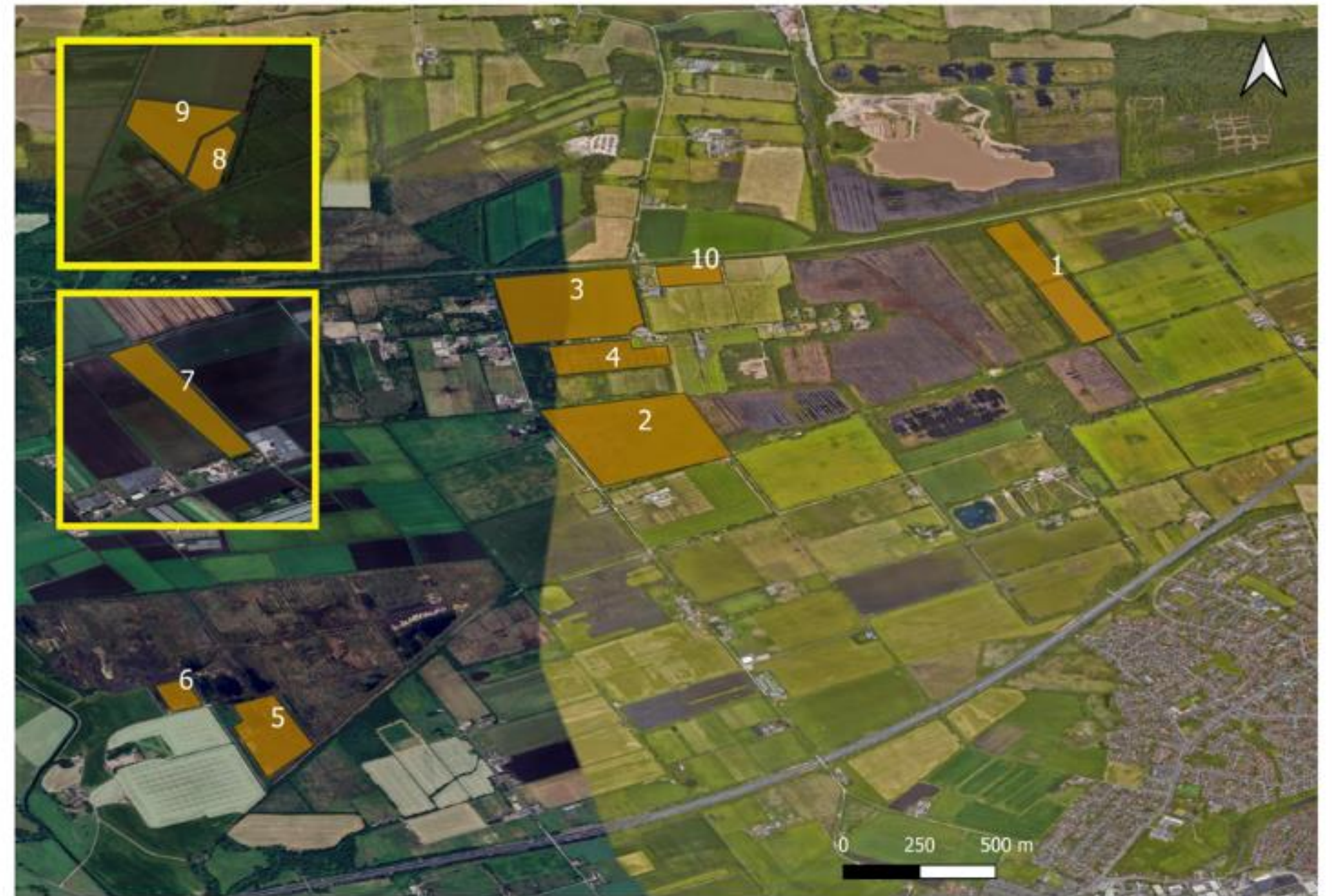
# Paludiculture Demonstrator United Kingdom



**Partners:** Manchester Metropolitan University, Liverpool John Moores University, Natural England, IUCN UK Peatland Programme, Micropropagation Services, Wright Farm Produce Ltd, Saltyco, Lancashire Wildlife Trust, The Andersons Centre

## The UK demonstration site will seek to:

- Support monetisation for carbon crediting
- Enhance and extend existing wetter farming sites
- Complete crop cycles to harvest for Sphagnum, Typha and wetter food
- Create pathways for conversion of degraded agricultural land
- Add additional carbon into peat
- Demonstrate paludiculture at landscape level



## *Greater Manchester and Lancashire Mosslands*



Institiúid na hEolaíochta Sonraí  
Data Science Institute

PALUS DEMOS 101182338 Funded by the EU

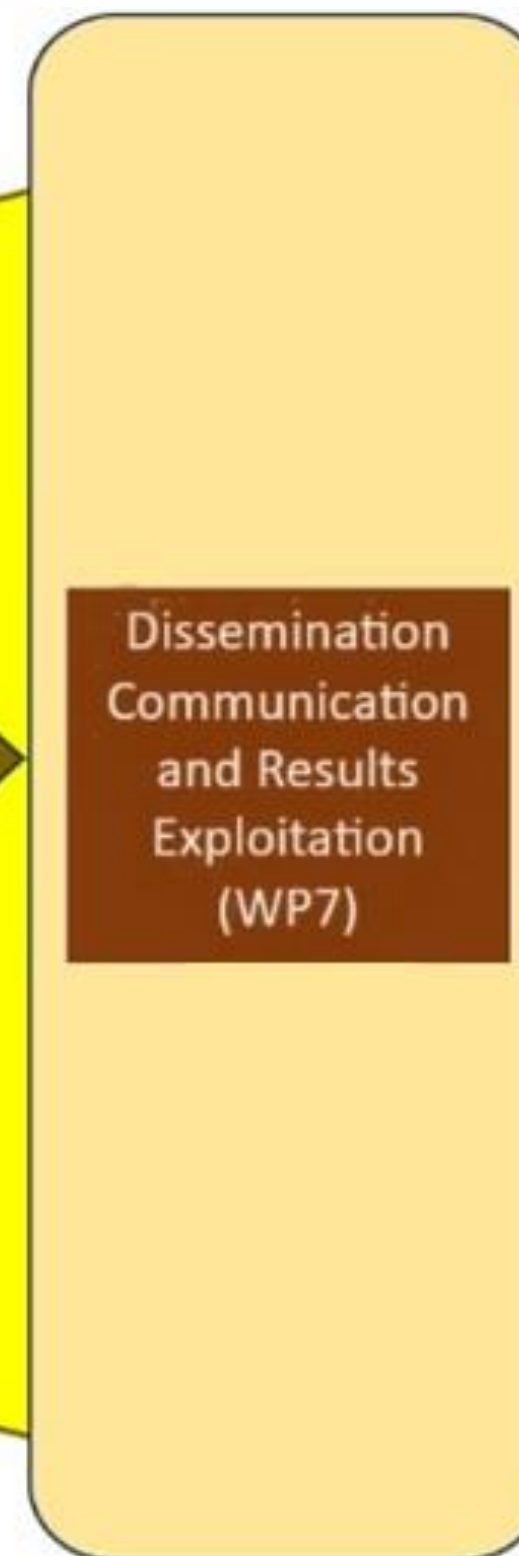
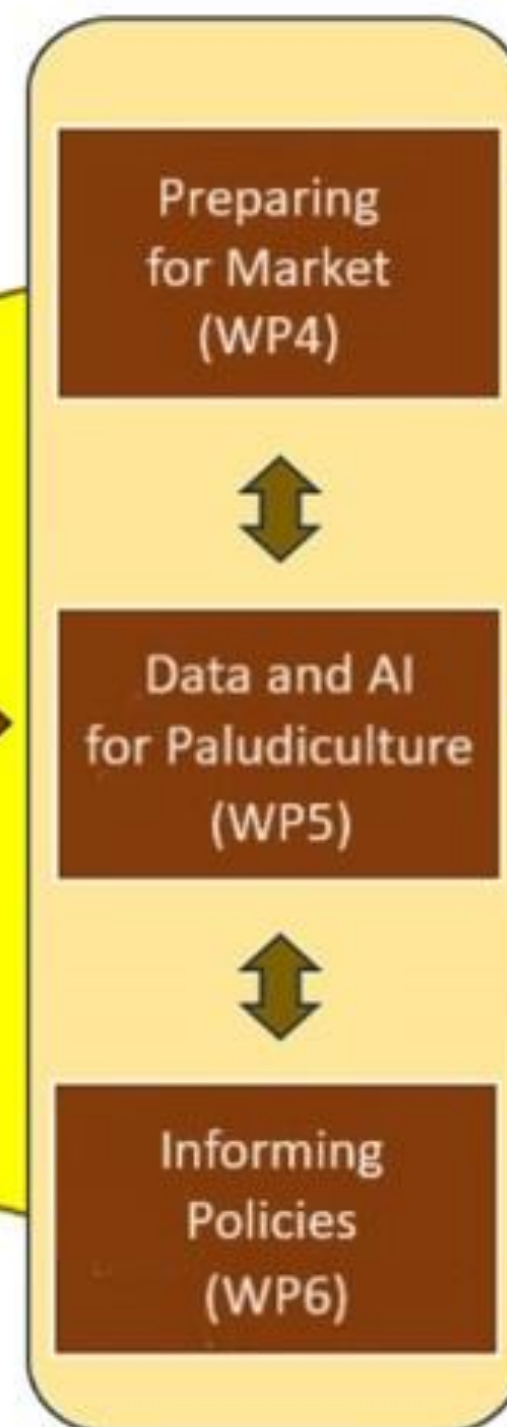
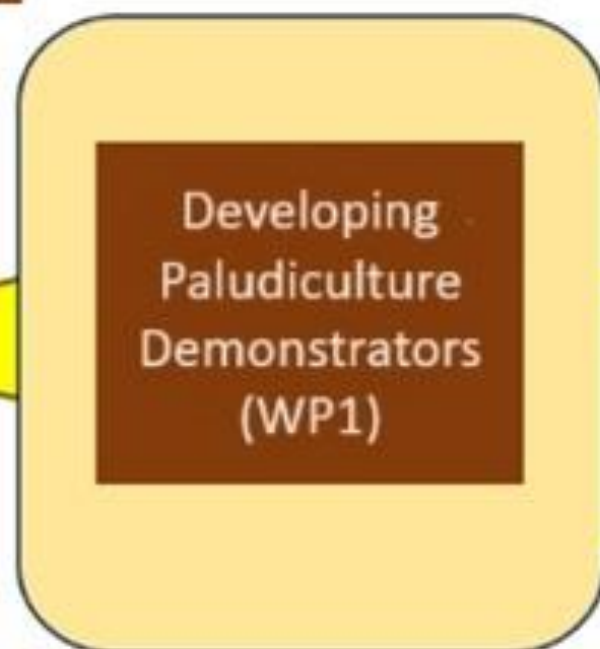




# Palus Demos



Management  
(WP8)



## Other Partners

- Eurosite
- NABU (Germany)
- Landscape Finance Lab (Austria)
- FH Media (Ireland)

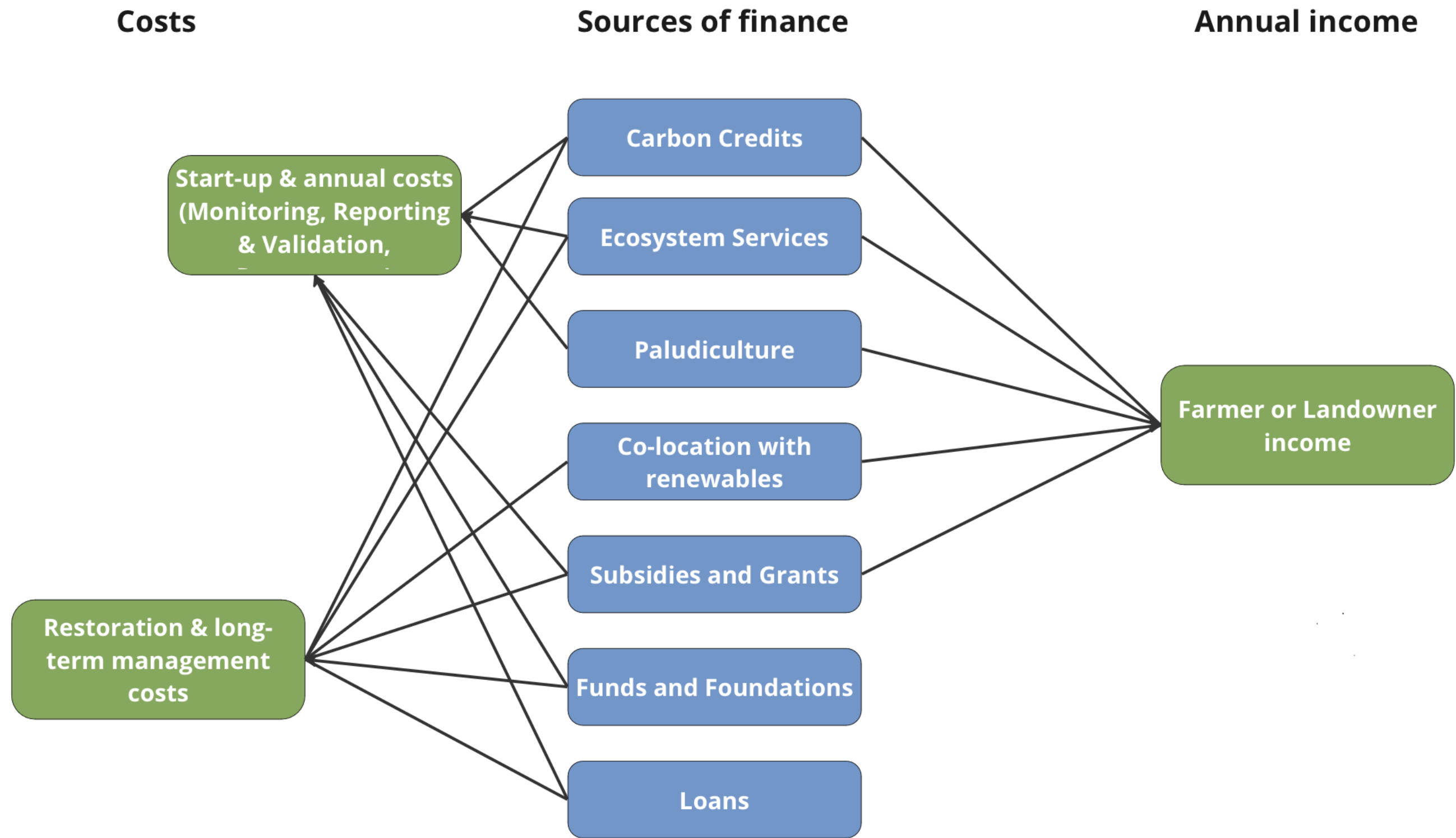
Paludiculture: large-scale demonstrations HORIZON-CL6-2024-CLIMATE-01-3



# Preparing for Market

- Materials development and capacity building on landscape finance
- Co-creation workshops involving international experts
- Investment opportunities for paludiculture
- Develop sustainable socio-economic models
- Develop accounting methods for carbon removals
- Creating a long-term business plan for each demonstrator

## Blended Finance Model





# Developing the SmartPaludi decision support platform

## SmartPaludi Features:

- Data Integration and Diverse Sources
- Real-Time Data Processing
- AI-Powered Predictive Analytics
- User-Friendly Decision Support Platform
- Continuous Validation and User Engagement

Visualizations and Insights



Sustainable policies and decision making



Accessible visual

AI Model Development



Data Collection and Integration



Paludiculture data

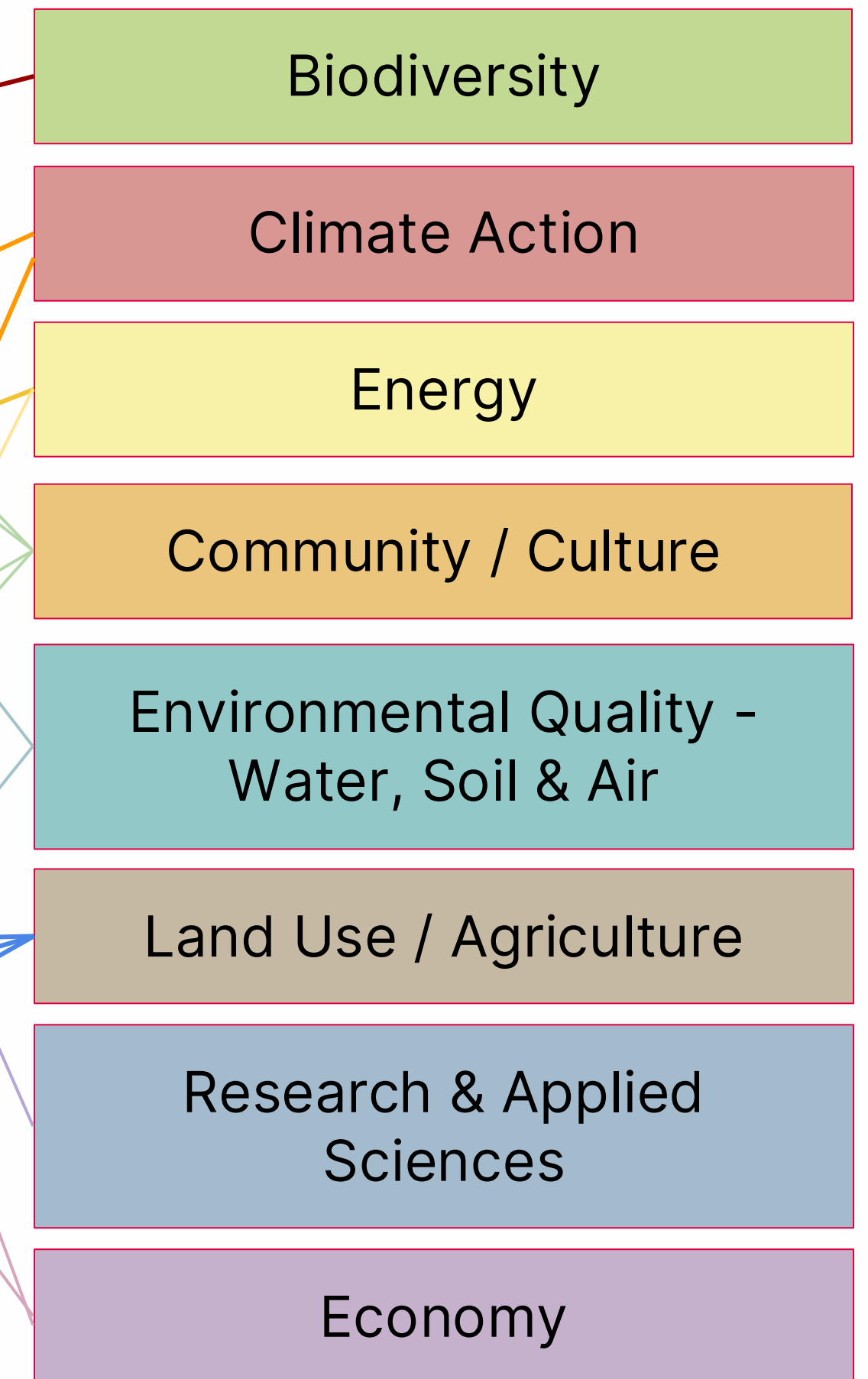


# Informing Policies

## EU Green Deal

Transition to a circular economy
Preserving Europe's natural capital
Sustainable Transport
Achieving Climate Neutrality
Clean, Reliable and Affordable energy
Financing the transition
Leave no one behind (Just Transition)
Towards a modernised and simplified CAP
The transformation of agriculture and rural areas
Farm to Fork
A zero pollution Europe

## Policy Classifications





# Irish Programme for Government and Palus Demos

- ❑ Protect and enhance farm incomes
- ❑ Horticulture - Work to increase new people into the sector.
- ❑ Reflect the financial impact of designation of land on farmers in the framing of future CAP schemes.
- ❑ Expand the Agricultural Sustainability in consultation with farmer and industry stakeholders.
- ❑ Maintain support to farmers on High Nature Value lands.
- ❑ Introduce a National Framework for Carbon Farming to guide the development of a Carbon Farming Scheme to strengthen farm incomes.
- ❑ Maximise soil health and fertility.
- ❑ Set ambitious targets to reduce greenhouse gas emissions by 2040.
- ❑ Implement a Whole-of-Government Strategy to fully integrate the SDGs, international policies and initiatives.
- ❑ Supporting a Sustainable Transition in Agriculture.
- ❑ Provide sustainable diversification options for farmers to generate new or additional sources of farm income.



# Sphagnum Farming







# Paludi-Typha



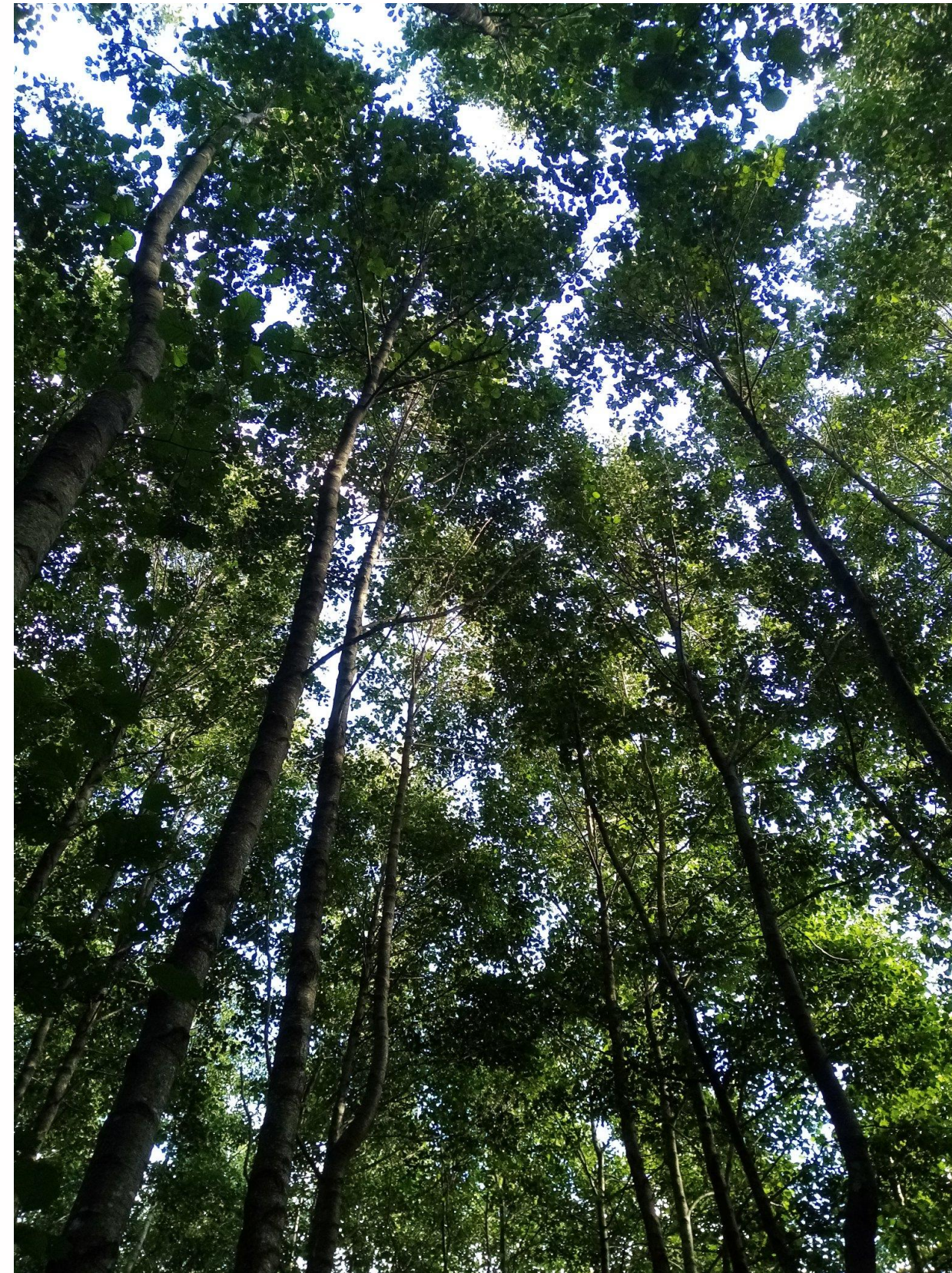


# Paludi-Constrution



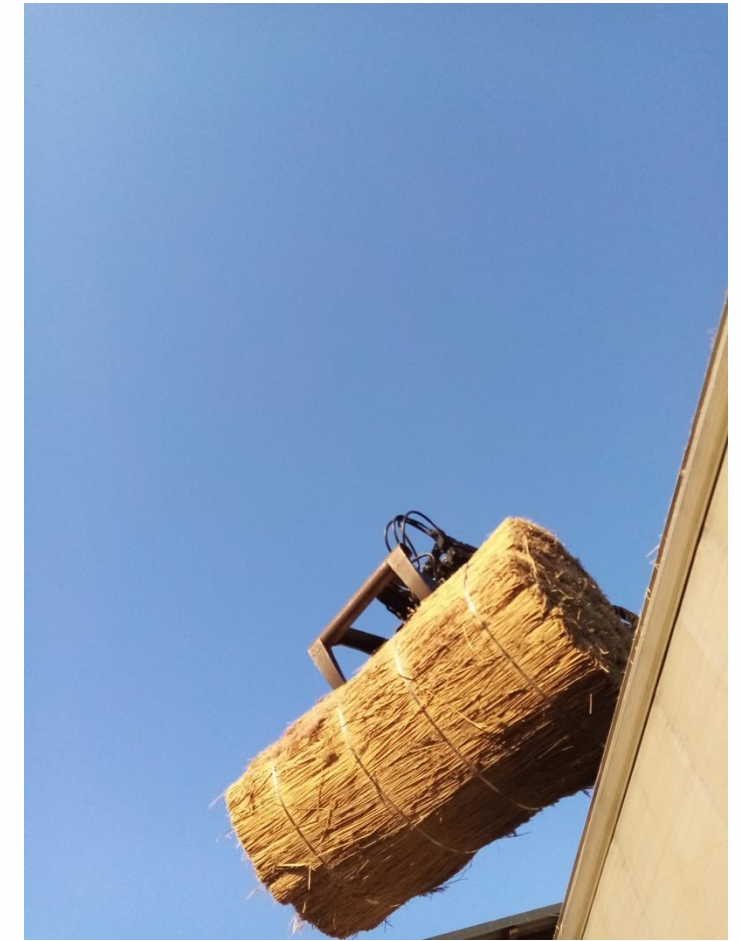


# Paludi-Forestry





# Paludi-Thatch





# Paludi-BioMass



OLLSCOIL NA  
GAILLIMHE  
UNIVERSITY  
OF GALWAY

Institiúid na hEolaíochta Sonraí  
Data Science Institute







OLLSCOIL NA GAILLIMHE  
UNIVERSITY OF GALWAY

Palus Demos



Thank you! Questions?

<https://palusdemos.org>

[niall.obrolchain@universityofgalway.ie](mailto:niall.obrolchain@universityofgalway.ie)



OLLSCOIL NA  
GAILLIMHE  
UNIVERSITY  
OF GALWAY

Institiúid na hEolaíochta Sonraí  
Data Science Institute

PALUS DEMOS 101182338 Funded by the EU

